

REVISION HISTORY			
REV	DESCRIPTION	DATE	APPROVED
0	INITIAL RELEASE	8/25/2016	TZ

NOM. PIPE SIZE: _____

FLANGE RATING: 150 300 600 900 1500

MATERIAL TYPE: _____ (316SS, MONL400, HASTC276, TI G2, OTHER)

PERFORATION SIZE: _____ (EX: 1/8" HOLES ON 3/16" CENTERS)

FLOW DIRECTION: NORMAL REVERSE

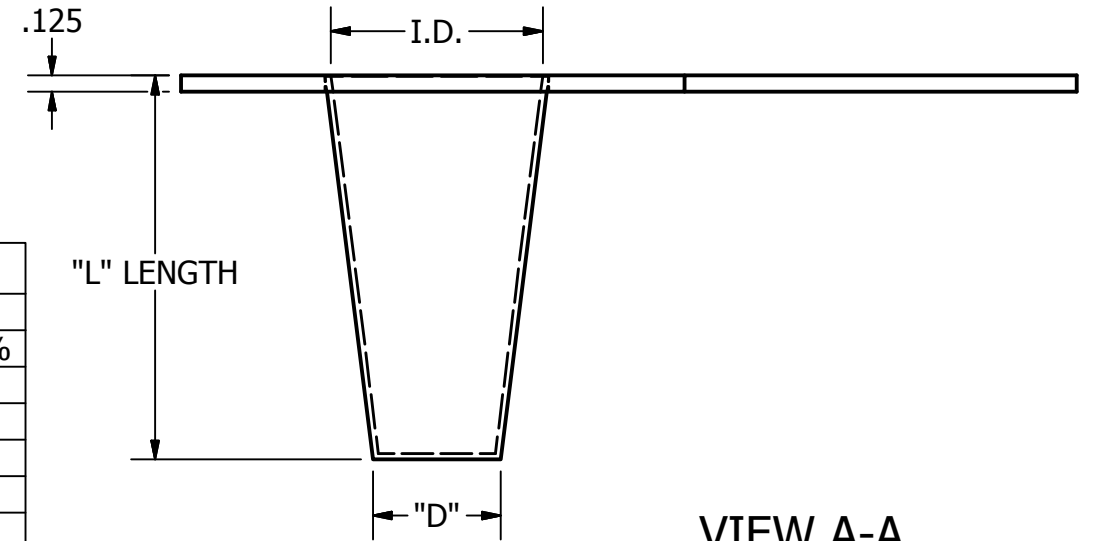
MESH SIZE: _____ (INDICATE NONE IF NOT REQUIRED)

HANDLE: YES NO


OPEN AREA: 100% 150% 200%

BASKET TYPE 1/8" PERF ON 3/16" CENTERS

NOM. PIPE SIZE	I.D.	O.D. 150/300 # ANSI	O.D. 600 # ANSI	O.D. 900 # ANSI	O.D. 1500 # ANSI	D	L		
							L=100%	L=150%	L=200%
3/4"	0.625	2.125	2.5	2.625	2.625	0.375	2	-	-
1"	0.75	2.5	2.75	3	3	0.5	2	-	-
1 1/2"	1.25	3.25	3.625	3.75	3.75	0.75	2.75	-	3
2"	1.75	4	4.25	5.5	5.5	1	3	-	4
2 1/2"	2.25	4.75	5	6.375	6.375	1.25	3.1875	-	4.5
3"	2.75	5.25	5.75	6.5	6.75	1.5	3.5	3.875	5.5
4"	3.75	6.75	7.5	8	8.125	2	4	5	7
5"	4.625	7.625	9.375	9.625	9.875	2.5	5	6.375	9
6"	5.375	8.625	10.375	11.25	11	3	6	7.75	11
8"	7.375	10.875	12.5	14	13.75	4	6.125	9.75	14
10"	9.375	13.25	15.625	17	17	5	7.5	12.375	18
12"	11	16	17.875	19.5	20.375	6	9	14.75	20
14"	12.25	17.375	19	20.375	22.625	7	10	15.875	21
16"	14	20.125	21.875	22.5	-	8	10	18.375	23
18"	15.75	21.25	23.75	25	-	9	12	20.875	27
20"	17.5	23.5	26.625	-	-	10	14	23.5	31
24"	21.25	27.875	30.875	-	-	12	16	28.375	37



VIEW A-A
SCALE 1 / 1.5

ENG APPR	NAME	DATE	 FLUID FILTRATION MANUFACTURING CORP.
MGR APPR	TOM Z.	8/25/2016	
MATERIAL: 3/16SS			TITLE
UNLESS OTHERWISE SPECIFIED DIMENSIONS ARE IN INCHES ANGLES ±X.X° 2 PL ±X.XX 3 PL ±X.XXX			TRUNCATED BASKET STRAINER SIZE B DWG NO FFM007 CUSTOMER: CUSTOMER NAME SCALE: 1 / 1.5 SHEET: 2 OF 2

THIS DRAWING CONTAINS INFORMATION PROPRIETARY TO FLUID FILTRATION MANUFACTURING CORPORATION, ANY UNAUTHORIZED USE OF THIS DRAWING IS EXPRESSLY PROHIBITED WITHOUT THE WRITTEN PERMISSION FROM FFM.